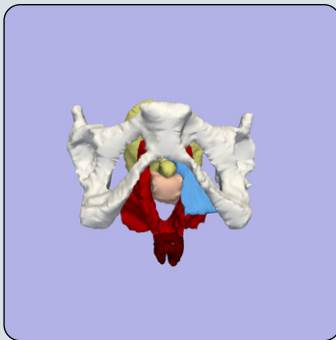


ON THE COVER



This 3-dimensional model of the pelvic structures of a 50-year-old nulliparous woman shows normal posterior compartment anatomy. The ability to construct the anatomy of living women for study allows the normal structure to be defined, then compared with structural abnormalities seen in disease. **Page 651.e1.**

Courtesy of Yvonne Hsu, MD; Christina Lewicky-Gaupp, MD; and John O.L. DeLancey, MD, Pelvic Floor Research Group, University of Michigan Health System, Ann Arbor, MI.

The image above and others form the authors' 3-D model appear with the full-length article at www.AJOG.org, where a video clip of the model in rotation can be viewed.

The *American Journal of Obstetrics & Gynecology* (ISSN 0002-9378) is published monthly by Elsevier Inc., 360 Park Avenue South, New York, NY 10010-1710. Business office: 1600 John F. Kennedy Blvd., Suite 1800, Philadelphia, PA 19103-2899. Editorial office: 360 Park Avenue South, New York, NY 10010-1710. Customer Service Office: 6277 Sea Harbor Drive, Orlando, FL 32887-4800. Periodicals postage paid at New York, NY and additional mailing offices. POSTMASTER: Send address changes to the *American Journal of Obstetrics & Gynecology*, Elsevier Periodicals Customer Service, 6277 Sea Harbor Drive, Orlando, FL 32887-4800.



JUNE 2008 ■ Volume 198, Number 6

REVIEW

OBSTETRICS

611 Maternal obesity and risk of neural tube defects: a metaanalysis

Sonja A. Rasmussen; Susan Y. Chu; Shin Y. Kim; Christopher H. Schmid; Joseph Lau

This metaanalysis shows evidence of an association between maternal obesity and neural tube defects.

CLINICAL OPINION

REPRODUCTIVE ENDOCRINOLOGY AND INFERTILITY

620 Male reproductive proteins and reproductive outcomes

Roberta B. Ness; David A. Grainger

That sperm and semen male reproductive proteins (MRPs) are critical to evolution and reproductive immunology argues for clinical research into how MRPs affect successful human reproduction.

OBSTETRICS

622 Improving patient safety and uniformity of care by a standardized regimen for the use of oxytocin

Edward J. Hayes; Louis Weinstein

A scientifically based standardized oxytocin protocol for induction/augmentation of labor is presented.

(continued on page 6A)



The article summaries that appear in the Journal are abbreviated versions of Research and Clinical Opinion articles published in full on the Journal's website at www.AJOG.org. While the great majority of these summaries are written by Journal staff and all are approved by the bylined authors and Journal editors, some summaries are written by the original authors and prepared for publication by Journal staff.

GLOSSARY OF SYMBOLS

Editors' Choice



Articles selected by the editors for special notice

Editors' Commentary



Explains the significance of an Editors' Choice article

Journal Club



Discussion of a research article in this issue

Cross-reference



Identifies interrelated articles

Fast-Track articles



Research articles sped to publication for the benefit of our readers

Supplemental material



A video clip, slides, or other supporting didactic information is available



at www.AJOG.org

Online-only articles



Article appears only at www.AJOG.org

Articles in full




A reminder that all articles summarized in AJOG are posted in full at www.AJOG.org

RESEARCH

GENERAL GYNECOLOGY

- 626** Misoprostol for treatment of early pregnancy failure in women with previous uterine surgery
Beatrice A. Chen; Matthew F. Reeves; Mitchell D. Creinin; Jerry M. Gilles; Kurt Barnhart; Carolyn Westhoff; Jun Zhang; for the National Institute of Child Health and Human Development Management of Early Pregnancy Failure Trial
Misoprostol treatment for early pregnancy failure has similar success, acceptability, and adverse events in women with and without previous uterine surgery.
- 628** The effect of vaginal douching cessation on bacterial vaginosis: a pilot study
Rebecca M. Brotman; Khalil G. Ghanem; Mark A. Klebanoff; Taha E. Taha; Daniel O. Scharfstein; Jonathan M. Zenilman
Cessation of douching yielded a significantly reduced risk of bacterial vaginosis in a subset of women who douched as a hygienic measure after menstruation.
- 630** Tailored intervention to increase dual-contraceptive method use: a randomized trial to reduce unintended pregnancies and sexually transmitted infections
Jeffrey F. Peipert; Colleen A. Redding; Jeffrey D. Blume; Jenifer E. Allsworth; Kristen A. Matteson; Faye Lozowski; Kenneth H. Mayer; Patricia J. Morokoff; Joseph S. Rossi
A tailored, computer-based intervention resulted in a 70% increase in reported dual-method contraceptive use in women at high-risk for sexually transmitted infections and unintended pregnancy.

OBSTETRICS

- 633** The frequency and significance of intraamniotic inflammation in patients with cervical insufficiency
 Si Eun Lee; Roberto Romero; Chan-Wook Park; Jong Kwan Jun; Bo Hyun Yoon
Intraamniotic inflammation, regardless of amniotic fluid culture results, is a risk factor for impending preterm delivery and adverse pregnancy outcome in patients with cervical insufficiency.
- EDITORS' COMMENTARY:** This article examines the frequency and clinical significance of intraamniotic infection in patients undergoing cervical cerclage for acute clinically recognizable cervical insufficiency. The frequency of acute inflammation defined by elevated MMP-8 concentration is much higher than previously recognized and correlates with earlier delivery and substantially worse neonatal outcome. This information should be strongly considered in the evaluation and management decisions of women who present with this condition.

(continued on page 8A)

EDITORIAL BOARD

Editors-in-Chief

Thomas J. Garite, MD
Moon H. Kim, MD

Editors Emeriti

E. J. Quilligan, MD
Frederick P. Zuspan, MD

Associate Editors

Richard C. Bump, MD
Sandra A. Carson, MD
Philip J. Di Saia, MD
Steven G. Gabbe, MD
Jay D. Iams, MD
Todd R. Jenkins, MD
Sarah J. Kilpatrick, MD, PhD
George A. Macones, MD
Maureen G. Phipps, MD, MPH
Roberto Romero, MD

Statistical Consultants

Larry Sachs, PhD
Mary D. Sammel, ScD

Managing Editors

Sandra Perrine
perrine@ajog.phxcoxmail.com
480-812-9261 phone
480-812-9409 fax

Donna L. Stroud
ajog@rroho.com
614-527-3820 phone
614-527-3821 fax

Editorial Consultant Editor, Article Summaries

Marcia Ringel

Creative Director

Ginny Hull

Published by Mosby, Inc.
An affiliate of Elsevier Inc.
360 Park Avenue South
New York, NY 10010-1710

RESEARCH (continued)

635 *Clostridium difficile*-associated diarrhea: an emerging threat to pregnant women



Nadine G. Roupael; Judith A. O'Donnell; Julu Bhatnagar; Felicia Lewis; Philip M. Polgreen; Susan Beekmann; Jeannette Guarner; George E. Killgore; Becky Coffman; Jennifer Campbell; Sherif R. Zaki; L. Clifford McDonald
Clostridium difficile infection might be increasing in number and severity in peripartum women.

EDITORS' COMMENTARY: Although the report by Roupael et al reviewed only a smaller number of pregnant or postpartum women with severe *Clostridium difficile*-associated disease, the morbidity and mortality in these women was shocking, including 30% mortality. Although the authors noted that it is not clear if there is an increase in the incidence of CDAD in pregnancy, certainly we should all be aware of the potential morbidity and mortality.

638 Predictors of necrotizing enterocolitis in preterm growth-restricted neonates

Anita C. Manogura; Ozhan Turan; Michelle L. Kush; Christoph Berg; Amarnath Bhide; Sifa Turan; Dolores Moyano; Sarah Bower; Kypros H. Nicolaidis; Henry L. Galan; Thomas Müller; Baskaran Thilaganathan; Ulrich Gembruch; Christopher R. Harman; Ahmet A. Baschat

Even with consideration of multiple Doppler parameters in fetal growth restriction, birthweight remains the predominant risk factor for necrotizing enterocolitis.

640 Method of delivery and neonatal outcome in very low-birthweight vertex-presenting fetuses



Blair J. Wylie; Leslie L. Davidson; Maneesh Batra; Susan D. Reed

Cesarean delivery does not improve survival for very low-birthweight vertex-presenting fetuses compared with vaginal delivery.



See Journal Club, page 713

643 Indomethacin administration at the time of ultrasound- indicated cerclage: is there an association with a reduction in spontaneous preterm birth?

John Visintine; James Airoidi; Vincenzo Berghella

Indomethacin administration at the time of ultrasound-indicated cerclage is not associated with a reduction in spontaneous preterm birth.

644 Paternal race and preterm birth

Hyagriv N. Simhan; Marijane A. Krohn

Paternal black race is an independent risk factor for preterm birth, but of lesser magnitude than maternal black race.

646 Pregnancies in glycogen storage disease type Ia

Daniëlle H. J. Martens; Jan Peter Rake; Martin Schwarz; Kurt Ullrich; David A. Weinstein; Martin Merkel; Pieter J. J. Sauer; G. Peter A. Smit

Successful pregnancies are possible in patients with glycogen storage disease type Ia, although specific risks are present.

(continued on page 10A)

ADVISORY BOARD

Subspecialty Areas

Ray O. Bahado-Singh, MD
Obstetric ultrasound

Judith Balk, MD
Nutrition

Sarah L. Berga, MD
Neuroendocrinology and reproductive neurobiology

Michael J. Birrer, MD, PhD
Biology of gynecologic cancers

Wendy R. Brewster, MD, PhD
Gynecologic epidemiology

William Camann, MD
Obstetric anesthesiology

Frank A. Chervenak, MD
Ethics

Reese Clark, MD
Neonatology

Arnold W. Cohen, MD
Managed care

Murray Freedman, MD
Psychosexual issues

Angela Gantt, MD
Residents' Issue

Robert E. Garfield, PhD
Uterine physiology

Ronald S. Gibbs, MD
Infectious diseases

Linda C. Giudice, MD, PhD
Reproductive cellular biology

Robert L. Goldenberg, MD
Obstetric epidemiology

Steven R. Goldstein, MD
Gynecologic ultrasound

Susan L. Hendrix, MD
Reproductive physiology

(Subspecialty Areas continued)

RESEARCH (continued)

ONCOLOGY

649 Robotic radical hysterectomy

James Fanning; Bradford Fenton; Manisha Purohit

We present 20 cases of robotic radical hysterectomy for early stage cervical cancer.

UROGYNECOLOGY

651 Posterior compartment anatomy as seen in magnetic resonance imaging and 3-dimensional reconstruction from asymptomatic nulliparas

Yvonne Hsu; Christina Lewicky-Gaup; John O. L. DeLancey

The normal posterior compartment has characteristic anatomic features that can be elucidated using magnetic resonance imaging and 3-dimensional modeling.

EDUCATION

653 Can mentors prevent and reduce burnout in new chairs of departments of obstetrics and gynecology: results from a prospective, randomized pilot study

Steven G. Gabbe; Lynn E. Webb; Donald E. Moore Jr; Lynn S. Mandel; Jennifer L. Melville; W. Anderson Spickard Jr

Although this study did not demonstrate that a mentoring program for new department chairs in obstetrics and gynecology significantly altered burnout over a 1-year period, participants reported positive results from relationships with both assigned and local mentors. The data also showed lower burnout for new chairs when compared with all chairs in a similar 2002 study.

MEETING PAPERS



SELECTED PAPERS FROM THE 74TH ANNUAL SCIENTIFIC MEETING OF THE CENTRAL ASSOCIATION OF OBSTETRICIANS AND GYNECOLOGISTS

656 Overcoming militant mediocrity

Mark I. Evans

Ligation of the internal iliac artery 5 cm distal from the common iliac artery bifurcation should avoid posterior division branches in the majority of cases.

661 Validation of a real-time urodynamic measure of urinary sensation

Lior Lowenstein; Mary P. FitzGerald; Kimberly Kenton; Linda Brubaker; Ilan Gruenwald; Irena Papier; Ramón A. Durazo-Arvizu; Christina Elliot; Elizabeth R. Mueller; Yoram Vardi

We describe the use and initial validation of a device to record continuously and display urinary sensation during cystometry.

664 Clinically useful measures in women with mixed urinary incontinence

Lior Lowenstein; Kimberly Kenton; Mary Pat FitzGerald; Linda Brubaker

Patient bother and quality-of-life impact from urinary incontinence does not require assessment of incontinence episode frequency using a urinary diary.

(continued on page 12A)

ADVISORY BOARD

Subspecialty Areas *(continued)*

Robert J. Kurman, MD
Gynecologic pathology

Laurence B. McCullough, MD
Ethics

Jennifer L. Melville, MD, MPH
Behavioral medicine

Thomas J. Musci, MD
Fetal physiology

Leslie Myatt, PhD
Vascular biology

Anita L. Nelson, MD
Family planning

Jennifer R. Niebyl, MD
Drugs in pregnancy

Pasquale Patrizio, MD, MBE
Andrology

Susan D. Reed, MD, MPH
Menopause

Joseph S. Sanfilippo, MD, MBA
Adolescent gynecology

Nanette Santoro, MD
Menopause

Robert M. Silver, MD
Immunology

Stephen Vermillion, MD
New reviewers

Kenneth Ward, MD
Molecular genetics

Katharine D. Wenstrom, MD
Genetics and teratology

Sharon Wilczynski, MD, PhD
Cytology and pathology

MEETING PAPERS *(continued)*

666 Racial disparity in maternal-fetal genetic epistasis in spontaneous preterm birth

Stephen J. Fortunato; Ramkumar Menon; Digna R. Velez; Poul Thorsen; Scott M. Williams

Significant multilocus interactions were observed between SNPs in proinflammatory genes in white maternal and black fetal DNA.

668 Reducing high-order perineal laceration during operative vaginal delivery

Emmet Hirsch; Elaine I. Haney; Trent E. J. Gordon; Richard K. Silver

The rate of high-order perineal injury during operative vaginal delivery was reduced after introducing focused practice recommendations and performance review.

670 Endocrine and metabolic differences among phenotypic expressions of polycystic ovary syndrome according to the 2003 Rotterdam consensus criteria

Robert P. Kauffman; Teresa E. Baker; Vicki M. Baker; Pamela DiMarino; V. Daniel Castracane

Androgen levels are the major distinguishing endocrine feature differentiating various phenotypic expressions of polycystic ovary syndrome defined by the American Society for Reproductive Medicine/European Society of Human Reproduction and Embryology Rotterdam consensus criteria.

673 Small fetal size before 20 weeks' gestation: associations with maternal tobacco use, early preterm birth, and low birthweight

Brian M. Mercer; Amy A. Merlino; Cynthia J. Milluzzi; John J. Moore

Small fetal size on early pregnancy ultrasound is associated with maternal tobacco use and subsequent early preterm birth and low- and small-for-gestational-age birthweight infants.

MEETING PAPERS



SELECTED PAPERS FROM THE 74TH ANNUAL MEETING OF THE PACIFIC COAST OBSTETRICAL AND GYNECOLOGICAL SOCIETY

676 Maintaining excellence of patient care in obstetrics and gynecology: the role of Hippocrates and the generalist

Frank Gamberdella

The Hippocratic Oath and its emphasis on the doctor-patient relationship is the key to maintaining excellence in patient care and the integrity of our specialty.

679 Robotic surgery in gynecologic oncology: program initiation and outcomes after the first year with comparison with laparotomy for endometrial cancer staging

Dan S. Veljovich; Pamela J. Paley; Charles W. Drescher; Elise N. Everett; Chirag Shah; William A. Peters III

Robotic surgery for endometrial cancer staging is feasible and is associated with less blood loss and shorter length of stay, compared with laparotomy.

(continued on page 14A)

ADVISORY BOARD

International Advisers

- Aris Antsaklis, MD, PhD
Greece
- Rigmor Austgulen, MD, PhD
Norway
- Phillip R. Bennett, MD, PhD
United Kingdom
- Dominique Cabrol, MD, PhD
France
- Pavel Calda, MD, PhD
Czech Republic
- Ernesto Castelazo, MD
Mexico
- Zi-Jiang Chen, MD, PhD
China
- Agustin Conde-Agudelo, MD
Colombia
- Gian Carlo DiRenzo, MD, PhD
Italy
- Joachim Dudenhausen, MD
Germany
- William Fraser, MD, MSc, FRCSC
Canada
- Sharad Gogate, MD
India
- Wolfgang Holzgreve, MD
Switzerland
- Jung Gu Kim, MD, PhD
Korea
- Karel Marsal, MD, PhD
Sweden
- Enrique Oyarzun, MD
Chile
- Zoltán Papp, MD, PhD
Hungary
- Gamal I. Serour, MD
Egypt
- Niels Ulbjerg, MD
Denmark
- Herman P. van Geijn, MD, PhD
The Netherlands
- Liliana S. Voto, MD
Argentina

MEETING PAPERS (continued)

682 Google obstetrics: who is educating our patients?

Anjali J. Kaimal; Yvonne W. Cheng; Allison S. Bryant; Mary E. Norton; Brian L. Shaffer; Aaron B. Caughey

Little of the obstetric information obtained using commercial internet search engines is created by obstetricians; obstetrician-gynecologists should consider how to use this forum more effectively.

684 Pregnancy outcome after a primary antenatal hemorrhage between 16 and 24 weeks' gestation

Craig V. Towers; Amy E. Burkhardt

Antenatal hemorrhage that first occurs between 16 and 24 weeks' gestation is associated with a high rate of pregnancy loss.

686 Antenatal fetal surveillance in pregnancies complicated by fetal gastroschisis

Craig V. Towers; Margaret H. Carr

Antenatal fetal surveillance, starting at 28 to 29 weeks' gestation, may be warranted in pregnancies complicated by fetal gastroschisis.

688 Older victims of sexual assault: an underrecognized population

Linda O. Eckert; Naomi F. Sugar

Sexually assaulted postmenopausal women are more commonly alone, in their own home or care facility, disabled, and injured genitally than younger sexual assault victims.

690 Voluntary physician adoption of an inpatient electronic medical record by obstetrician-gynecologists

David C. Lagrew Jr; Harris R. Stutman; Laurie Sicaeros

A successful voluntary physician adoption of an electronic medical record by members of a department of obstetrics and gynecology leads to improved direct computerized physician order entry and documentation.

692 How resident unprofessional behavior is identified and managed: a program director survey

Karen E. Adams; Sandra Emmons; Jillian Romm

Obstetrics-gynecology program directors' experience with remediation of unprofessional residents is mixed, and some hesitate to communicate concerns to potential employers.

694 Nulliparous term singleton vertex cesarean delivery rates: institutional and individual level predictors

Dean V. Coonrod; David Drachman; Paula Hobson; Maria Manriquez

Substantial variations in nulliparous term singleton vertex cesarean delivery rates were seen in this comparative analysis of 40 Arizona hospitals.

697 The impact of a group psychoeducational appointment on women with sexual dysfunction

Wendy J. Smith; Kate Beadle; Elizabeth J. Shuster

A group psychoeducational intervention aimed at women with sexual dysfunction improves quantitative outcome measures of sexual function.

(continued on page 16A)

**AFFILIATES
AND
ADVISERS**

The Journal is the official publication of the following societies and associations.

**American Gynecological
and Obstetrical Society**

www.agosonline.org

James E. Ferguson II, MD

**Association of Professors
of Gynecology and Obstetrics**

www.apgo.org

Joseph M. Ernest III, MD

**Central Association of
Obstetricians and Gynecologists**

www.caog.org

Bryan D. Cowan, MD

**Pacific Coast Obstetrical
and Gynecological Society**

www.pcogs.org

Phillip E. Patton, MD

Society of Gynecologic Surgeons

www.sgsonline.org

William W. Hurd, MD

Society for Maternal–Fetal Medicine

www.smfm.org

Roger B. Newman, MD

**South Atlantic Association of
Obstetricians and Gynecologists**

www.saaobgyn.org

Thomas K. Young, MD

MEETING PAPERS *(continued)*
699 Intermediate-term glucose tolerance in women with a history of gestational diabetes: natural history and potential associations with breastfeeding and contraception

Anita L. Nelson; Monica Hau Hien Le; Zuhra Musherraf; Anje VanBerckelaer
More than 40 of women with gestational diabetes had abnormal glucose tolerance postpartum and an additional 50 had deterioration in the following 24 months.

700 Length of rupture of membranes in the setting of premature rupture of membranes at term and infectious maternal morbidity

Susan H. Tran; Yvonne W. Cheng; Anjali J. Kaimal; Aaron B. Caughey
Rates of chorioamnionitis and endomyometritis in the setting of premature rupture of membranes at term are increased beyond 12-hours and 16-hours, respectively, when examining length of ruptured membranes by dichotomized time intervals.

703 First- vs second-trimester ultrasound: the effect on pregnancy dating and perinatal outcomes

Aaron B. Caughey; James M. Nicholson; A. Eugene Washington
Women with first trimester ultrasounds are diagnosed with postterm pregnancies and experience postterm induction less often than those with a second trimester ultrasound.

705 Is there value for serial ultrasonographic assessment of cervical lengths after a cerclage?

Herman L. Hedriana; Jan M. Lanouette; Hanns C. Haesslein; Lynn K. McLean
Absence of cervical length above the cerclage is predictive of preterm delivery, preterm premature rupture of membranes, and chorioamnionitis rather than serial ultrasonographic examination for overall cervical length.

707 Health care costs associated with changing clinics and “walk-in” deliveries: evidence supporting a regionalized health information network

Kathryn J. Shaw; Michelle Gutierrez; Moshe Fridman; Kimberly D. Gregory
Changing clinics is a common practice among Medicaid patients in Los Angeles County, CA, and results in increased health care costs.

710 Development and validation of a sexual functioning measure for use in diverse women’s health outcome studies

Lee A. Learman; Alison J. Huang; Sanae Nakagawa; Steven E. Gregorich; Miriam Kuppermann


JOURNAL CLUB
713 Delivery method and outcome in very low birthweight fetuses: Wylie et al

George A. Macones, MD, MSCE, Associate Editor

Is cesarean section the safest approach for delivering the frailest neonates? In taking apart a study that examined associations between delivery method and adverse events, Journal Club members pondered the merits of an extraordinary database, the variables selected, and the statistical treatment of the data. Will they practice any differently as a result?



See related article, page 640, and full discussion, page e1

(continued)

IMAGES IN GYNECOLOGY

715 Tumor-related symptoms?

Abdul Ghani Sankri-Tarbichi; Ayman O. Soubani

The patient presented with abdominal pain and fatigue. Computed tomography of the chest, abdomen, and pelvis disclosed very grim findings.

SURGEON'S CORNER

716 Type III radical hysterectomy and pelvic lymphadenectomy via minilaparotomy



Kittipat Charoenkwan; Sitthicha Siriaree;

Chalong Cheewakriangkrai; Jatupol Srisomboon

A minimally invasive technique generated promising results when tested in 18 women with early cervical cancer. The goal: a safe and speedy recovery.

CASE REPORT

717 Signal ambiguity resulting in unexpected outcome with external fetal heart rate monitoring



Duncan R. Neilson Jr; Roger K. Freeman; Shelora Mangan

Modern highly sensitive external fetal heart transducers may imperceptibly substitute portions of maternal heart rate into the fetal heart tracing, masking significant fetal compromise.

EDITORS' COMMENTARY: Intrapartum external electronic fetal heart rate monitoring using Doppler is widely applied. These authors report a rare but important heart rate pattern during second-stage bearing-down efforts by the mother in which maternal heart rate accelerations appear as a reassuring fetal heart rate pattern. They advocate that placement of a fetal scalp electrode should be performed to resolve this question. In a multiple pregnancy, this strategy may also help to differentiate not only the maternal heart rate but also signals from another fetus.

LETTERS TO THE EDITORS

725 Antenatal indomethacin is more likely associated with spontaneous intestinal perforation rather than NEC

Phillip V. Gordon; Jonathan R. Swanson; Reese Clark

725 Reply

Sanjiv B. Amin; Robert A. Sinkin; J. Christopher Glantz

726 Combining 'nasal bone length assessment as MoM' with other markers for trisomy 21 screening: could it be more effective?

Fatma Bahar Cebesoy

726 Reply

Anthony O Odibo; Harish M Sehdev; David M Stamilio

727 The relationship between predicting and preventing PTB

Manju Chandiramani; Andrew H Shennan

727 Reply

Amen Ness; Vincenzo Berghella

(continued on page 18A)

What's coming in AJOG?

Registered users may receive the Table of Contents by e-mail before publication each month!

- 1 Go to the Journal website, www.AJOG.org.
- 2 Click on My Alerts in the upper right hand corner of the page.
- 3 You may now sign up for Table of Contents and Articles Online First (Articles in Press) alerts for the Journal and other Elsevier publications.



The article summaries that appear in the Journal are abbreviated versions of Research and Clinical Opinion articles published in full on the Journal's website at www.AJOG.org. While the great majority of these summaries are written by Journal staff and approved by the bylined authors and Journal editors, some summaries are written by the original authors and prepared for publication by Journal staff.

Call for Papers

9TH ANNUAL

RESIDENTS' ISSUE

■

PUBLICATION DATE:

Volume 200, No. 5, May 2009

DEADLINE FOR SUBMISSIONS:

July 31, 2008

The editors invite ob-gyn residents to submit papers for the ninth annual Residents' Issue of the Journal.

- Research must be completed and papers submitted to the Journal during the author's residency program, before graduation.
- All bylined authors of papers accepted for publication (up to 40) will receive a 1-year subscription to the Journal.
- Submissions will be accepted from May 1 through July 31, 2008.
- For requirements of length, format, and submission, please see www.AJOG.org.

Inquiries:

Sandra Perrine
Managing Editor
Residents' Issue

perrine@ajog.phxcoxmail.com

Fax: 480-812-9409

■

CORRECTIONS

728 Nucleated red blood cells are a direct response to mediators of inflammation in newborns with early-onset neonatal sepsis
Dulay et al

728 Prevalence of thrombophilias and risk of preterm delivery in patients with prior history
Rades et al

PROFESSIONAL AND EDUCATIONAL OPPORTUNITIES

21A Classified Advertising

AJOG ONLINE

Articles whose page numbers begin with *e* appear only at www.AJOG.org.

JOURNAL CLUB ROUNDTABLE

e1 Delivery method and outcome in very low birthweight fetuses: Wylie et al



Moderator: George A. Macones; discussants: David M. Stamilio; Alison G. Cahill; Lorie Harper; Kristen Bibee

In trying to determine the safest way to usher a very low birthweight infant into the world, investigators culled information from a formidable Washington state database. Journal Club members discussed the primary and secondary analyses, along with the strengths and weaknesses of this work. Did the research deliver?