



p35-null mice exhibit normal glomerular and podocyte differentiation. The cover shows a representative image of wild-type cells showing staining for nephrin. Image enhancement by MaryLou Quillen. See the article by Brinkkoetter et al., page 690

653 in this issue

655 journal club

commentaries

657 Urinary liver fatty acid-binding protein: another novel biomarker of acute kidney injury
Blaithin A. McMahon and Patrick Thomas Murray

660 A role for novel cell-cycle proteins in podocyte biology
Peter M. Price

mini review

662 Toward the development of podocyte-specific drugs
Jochen Reiser, Vineet Gupta and Andreas D. Kistler

review

669 Afferent mechanisms of sodium retention in cirrhosis and hepatorenal syndrome
Juan A. Oliver and Elizabeth C. Verna

original articles/basic research

681 Tetrahydrobiopterin protects the kidney from ischemia–reperfusion injury
Robert Sucher, Philipp Gehwolf, Rupert Oberhuber, Martin Hermann, Christian Margreiter, Ernst R. Werner, Peter Obrist, Stefan Schneeberger, Robert Ollinger, Raimund Margreiter and Gerald Brandacher

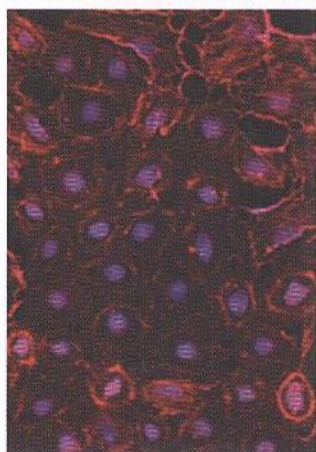
690 p35, the non-cyclin activator of Cdk5, protects podocytes against apoptosis *in vitro* and *in vivo*
Paul T. Brinkkoetter, Jimmy S. Wu, Takamoto Ohse, Ronald D. Krofft, Bernhard Schermer, Thomas Benzing, Jeffrey W. Pippin and Stuart J. Shankland

original articles/clinical research

700 Age and comorbidity may explain the paradoxical association of an early dialysis start with poor survival
Mathilde Lassalle, Michel Labeeuw, Luc Frimat, Emmanuel Villar, Véronique Joyeux, Cécile Couchoud and Bénédicte Stengel on behalf of the REIN Registry

708 Urinary liver-type fatty acid-binding protein predicts adverse outcomes in acute kidney injury
Michael A. Ferguson, Vishal S. Vaidya, Sushrut S. Waikar, Fitz B. Collings, Kelsey E. Sunderland, Costas J. Gioules and Joseph V. Bonventre

715 Vitamin D deficiency and anemia in early chronic kidney disease
Neha M. Patel, Orlando M. Gutiérrez, Dennis L. Andress, Daniel W. Coyne, Adeera Levin and Myles Wolf



See page 662



See page 681



See page 690

721 Recurrent membranoproliferative glomerulonephritis after kidney transplantation

Elizabeth C. Lorenz, Sanjeev Sethi, Nelson Leung, Angela Dispenzieri, Fernando C. Fervenza and Fernando G. Cosio

729 Development and validation of equations estimating glomerular filtration rates in Chinese patients with type 2 diabetes

Tak-Kei Leung, Andrea OY Luk, W-Y So, Matthew KW Lo and Juliana CN Chan

technical note

736 Tamm-Horsfall protein and urinary exosome isolation

Patricia Fernández-Llana, Sookkasem Khositseth, Patricia A. Gonzales, Robert A. Star, Trairak Pisitkun and Mark A. Knepper

letters to the editor

743 The hypothesis that bone turnover influences FGF23 secretion

Ichiro Ohkido, Keitaro Yokoyama, Shino Kagami and Tatsuo Hosoya

743 Reply to 'The hypothesis that bone turnover influences FGF23 secretion'

Tamara Isakova, Orlando M. Gutiérrez and Myles Wolf

744 Assessment of acid–base disorders

Kenrick Berend

744 Reply to 'Assessment acid–base disorders'

Horacio J. Adrogue and Nicolaos E. Madias

745 Acute kidney injury and long-term outcomes: more to learn

Azra Bihorac, Jesse D. Schold and Charles E. Hobson

745 Reply to 'Acute kidney injury and long-term outcomes: more to learn'

Chi-yuan Hsu, Lowell J. Lo and Alan S. Go

nephrology image

746 Renal allograft loss due to overwhelming invasive *Candida* infection

Mordecai J. Stolk, Anne L. King and H. Davis Massey